



Born to run

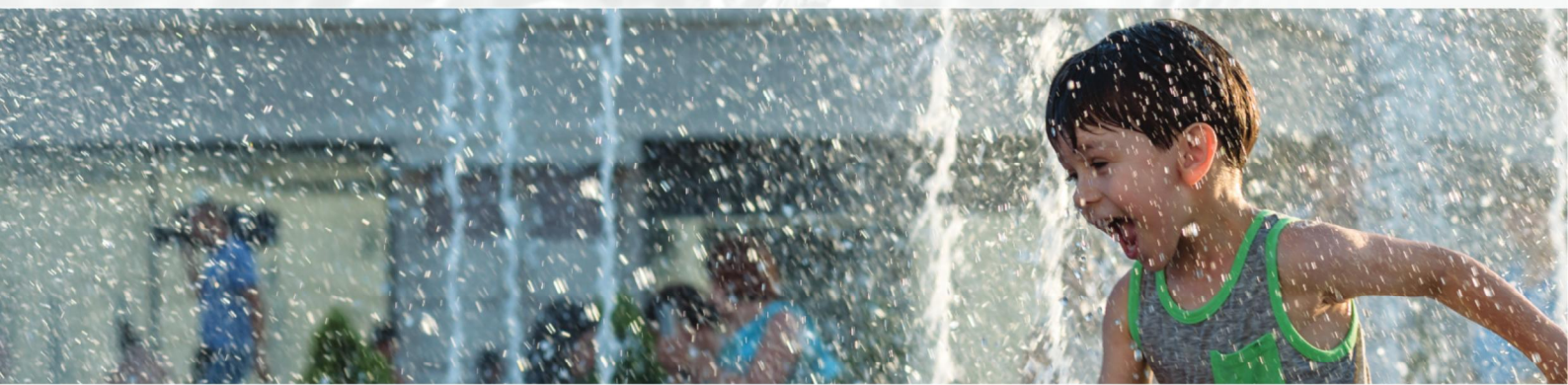
Day-after-day-after-day

Dionex Inuvion ion chromatography system

thermo scientific

Welcome to the evolution of everyday C reliability

The new Thermo Scientific™ Dionex™ Inuvion™ ion chromatography system makes ion analysis simpler and more intuitive than ever before. And it delivers exactly what a busy analytical testing lab is looking for: consistently excellent results—every shift, every day, for every operator.



SIMPLE, INTUITIVE USER EXPERIENCE

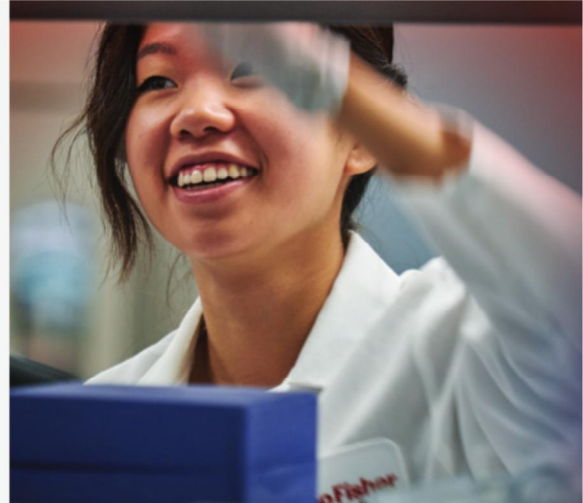
- **Smart, function-driven design** lets you quickly and safely access everything on the instrument—no hard-to-reach compartments, and no step stools or extra tools needed!
- **Automated startup and shutdown routines** ensure the system is quickly ready for the day's work without user intervention.
- **Built-in how-to videos** reduce training time and simplify setup and operation.

ULTRA-RELIABLE PERFORMANCE

- **Advanced high-performance pump technology** and electronics let you take advantage of a wider range of columns and chemistries to improve the speed and quality of your results.
- **Fast, flexible, convenient electrolytic suppression:** Just connect the suppressor; no external pump or offline conditioning needed for regeneration.
- **Reagent-free IC (RFIC™)** capability makes eluent preparation as simple as “just add water,” while ensuring more consistent results and enabling optimized gradient separations.

EASILY CONFIGURABLE AND UPGRADEABLE

- **Versatile, adaptable platform** lets you configure the exact Dionex Inuvion IC system for today's needs and budget, with confidence that your system will also meet your future needs.
- **Multiple options and peripherals extend IC capabilities,** letting you easily—and cost-effectively—adapt to changing sample types and workflow requirements.



Start with Inuvion Core

The Inuvion Core system gives you all the benefits of chemical suppression and higher-pressure operation, with manual eluent preparation. You still enjoy the same robust Dionex Inuvion platform—easily configurable and economically upgradeable to full-featured capabilities as budget allows.





Simply the best system for everyday ion analysis

- 1 **Operator-friendly engineering** saves time and reduces errors by allowing easy, unobstructed access to all components, connections and consumables
- 2 **Compact design** helps you make the most of valuable bench space
- 3 **Digital gas pressure regulator** increases precision of gas delivery for maximum day-to-day consistency (optional)
- 4 **Temperature-controlled conductivity cell** improves reproducibility and ensures baseline stability
- 5 **Vacuum degassing capability** enables more consistent peak identification from smoother baselines
- 6 **Seal wash pump** reduces maintenance costs when using manually prepared eluents (optional)
- 7 **Reagent-free IC (RFIC)** saves time and ensures greater day-to-day and operator-to-operator consistency, while also allowing the use of gradient separations
- 8 **Electrolytic suppression** entirely eliminates the need for manual regenerant preparation (or, opt for a continuously regenerated, always-ready-to-go chemical suppressor)
- 9 **Thermo Scientific™ Dionex™ IC PEEK Viper™ fittings** ensure confident, low dead volume connections every time—no tools required! (optional)
- 10 **Integrated column heater** minimizes the impact of fluctuations in lab temperature that can adversely affect results (optional)
- 11 **6- or 10-port auxiliary valve** lets you automate in-line sample preparation
- 12 **State-of-the-art high-pressure pump (up to 5000 psi)** lets you increase flow rates with smaller particle columns to reduce run times or add additional separation capacity with longer column length
- 13 **System self-diagnostics** automatically detect any issues with hardware and consumables
- 14 **Self-service capabilities and user-swappable parts** help you get back up and running in a hurry
- 15 **Automatic eluent monitor** alerts the operator to low solution levels, avoiding potential system damage or failed runs (optional)

Flexible, adaptable Dionex Inuvion platform

You can configure your Dionex Inuvion system to meet specific analytical and budget requirements, and easily reconfigure as needed. Multiple configurations and peripherals extend IC capabilities, letting you easily—and cost-effectively—adapt to changing sample types and workflow requirements.



Inuvion Core

Inuvion

High pressure pump (up to 5000 psi)	✓	✓	✓
Chemical suppression	✓	✓	✓
Vacuum pump and degasser	+	✓	✓
Electrolytic suppression	+	✓	✓
RFIC automatic eluent generation	+	+	✓

✓ Standard + Optional upgrade



Consistently excellent results every day

The Dionex Inuvion IC system supports a full range of columns to improve the speed and quality of results, for both anions and cations. Expanded capabilities, such as Reagent-Free IC (RFIC), enhance operator-to-operator consistency, while enabling the use of eluent gradients to optimize separations.

Rapid results

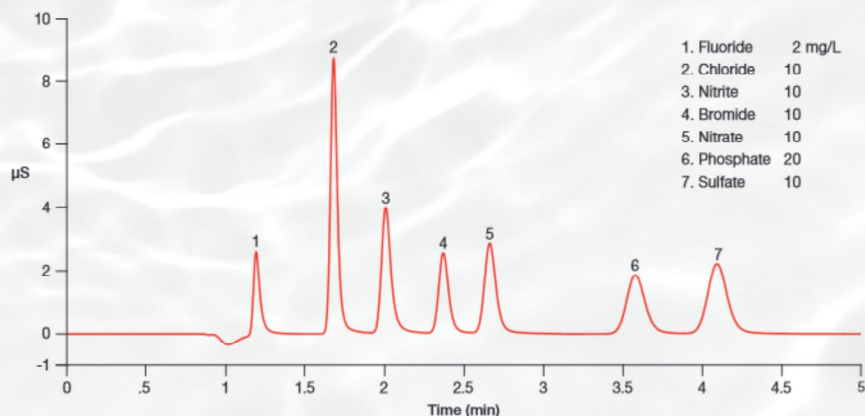


Figure 1. Elution of seven common inorganic anions using carbonate eluent. Short columns and fast flow rates let you reduce run times.

Exceptional reproducibility

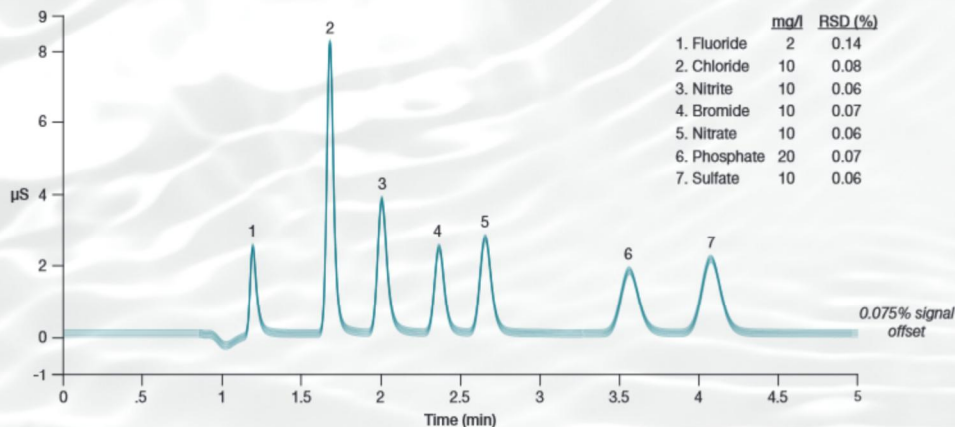
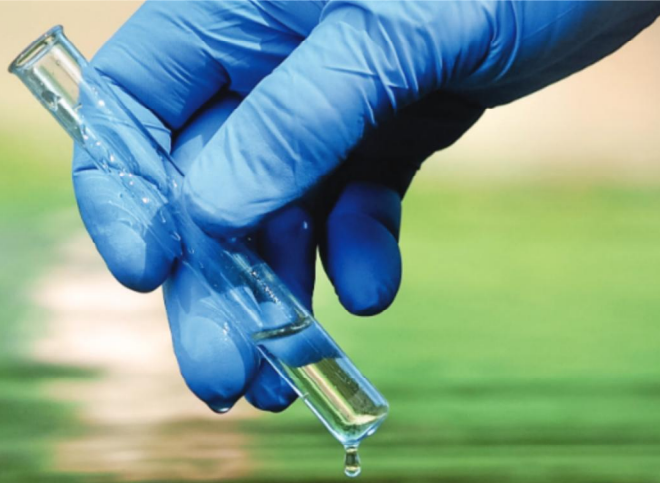


Figure 2. Overlay of 40 replicate injections. State-of-the-art pump technology and electronics deliver consistent, reproducible results.



Increased sensitivity and consistency

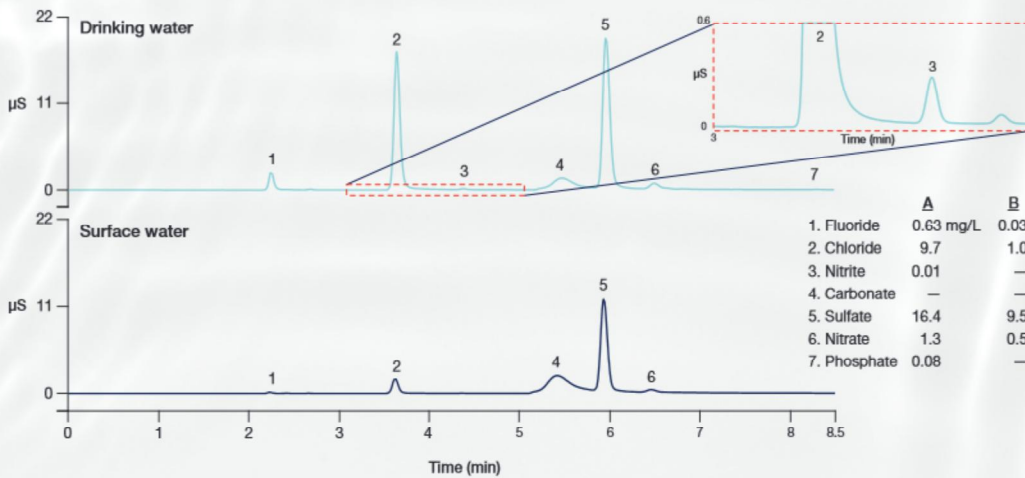


Figure 3. Determination of inorganic anions in drinking and surface waters. KOH eluent generation and electrolytic suppression yield lower backgrounds for greater sensitivity and increased day-to-day consistency.

Method optimization

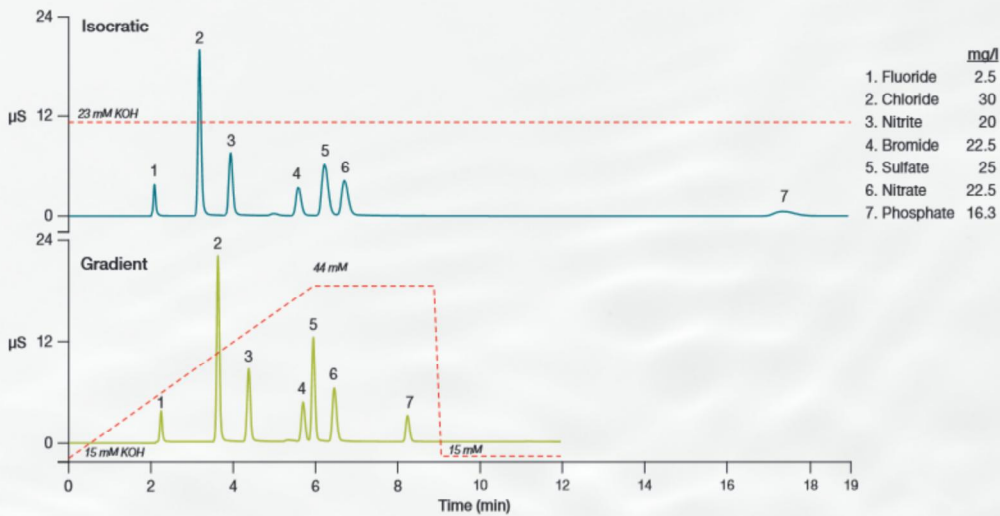


Figure 4. Comparison of isocratic and gradient runs using eluent generation. Reduce run length and sharpen later-eluting peaks with the same ease as an isocratic run with no need for two separate eluents or a proportioning pump.

Keep focused on what matters. We've got your back.

As part of Thermo Fisher Scientific, Unity Lab Services provides you with the tools and resources to optimize your laboratory, minimize downtime, and achieve high-quality reliable results from your instrument.

You can count on us to be there with the support you need, when and where you need it.



Compliance-ready Chromeleon CDS

A trusted industry standard all over the world, "Simply Intelligent" Thermo Scientific™ Chromeleon™ Chromatography Data System (CDS) software brings out the full power of the Dionex Inuvion IC system. Easy to learn and easy to use, it automates and optimizes daily tasks and helps even inexperienced users achieve consistent, high quality results.

Learn more at thermoscientific.com/inuvion

thermo scientific